

Lithgow State Mine Railway

Route of the Black Diamond

Newsletter Number 1 - April 2012

Hello!

Welcome to the first edition of the Lithgow State Mine Railway Limited Newsletter. Members, Volunteers, Supporters and Enthusiasts will be kept informed of our activities and events on a regular basis. The Newsletter will be emailed to Members and Volunteers and will be available for subscription via our website.

Lithgow State Mine Railway is entering an exciting new era of development and there will be much to report in upcoming issues.

To subscribe to LSMR Newsletter visit www.stateminerailway.com.au

Lithgow State Mine Railway – The Future!

Lithgow State Mine Railway (LSMR) is entering an exciting new era in its evolution after a number of serious set backs in recent years, the most notable of which was the disastrous fire which destroyed the Carriage Shed in 2001. The organisation has now developed a strategy to become self-sufficient and sustainable based upon a strategic partnership with Elderton Engineering which has established its rail servicing and maintenance business at the LSMR Workshops. Elderton Engineering, together with State and Regional Development, has been instrumental in providing in excess of \$150,000 to upgrade the State Mine branch and carry out extensive repairs to the two rail bridges located on the line. This work together with the maintenance certification has provided the opportunity to operate a tourist service on the State Mine branch line.

This initiative has assured a bright future for LSMR and has facilitated a number of conservation projects, including the restoration of our passenger cars, period freight wagons, diesel locomotives and our steam locomotive 2605. Already a number of dedicated volunteers are undertaking work on these projects on a regular basis working on the locomotives, both steam and diesel as well as carriages and rail motors.

Whilst a tremendous amount of work has already been undertaken there is still a great deal to be done to make this project a reality. As with most community based projects there is always one ingredient you can never have enough of – *volunteers*. So if you would like to be involved with Lithgow State Mine Railway at this exciting stage of its development we would love to hear from you. You don't have to be a "rail enthusiast" to be involved, anyone with an interest in the community or helping raise Lithgow's tourism potential is most welcome to join up and be part of this rewarding project.

All levels of expertise are welcome; from the beginner to the expert. In fact, don't be daunted – we will give you all the assistance and training you need – all we ask is that you come along and have a go! There are designated volunteer days but if you feel the need you can spend as much time as you like becoming involved with the many aspects of the work being undertaken.

For the outdoor types there is track maintenance and landscaping ... in fact there is something for everybody. Working bees are held each Sunday at 9.00 am at the Lithgow State Mine Railway Workshops.

If you would like to know more about becoming involved with our projects please contact one of the following for further information.

Ben Hudson – Volunteer Services Coordinator 0432 843 870

Michael Wilson – Chairman 0427 455 580



Steam Locomotive 2605 was extensively damaged in the Carriage Shed fire over a decade ago. Thanks to the efforts of our dedicated volunteers the locomotive is close to returning to operational service and being a major attraction at LSMR. Former BHP diesel-electric locomotive D23 has also been the subject of the efforts of our volunteers and was recently successfully restarted after a gap of eight years. The unit has been repainted in the BHP livery and will soon be used as a work horse around the Workshop and the Branch.

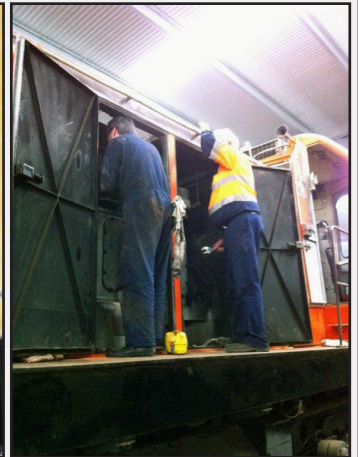
Restoration of this four wheeler LCH wagon was recently completed in the Workshop and a start has been made on a second vehicle shown in the inset.



Restoration Projects Update

D23 Back on Track!

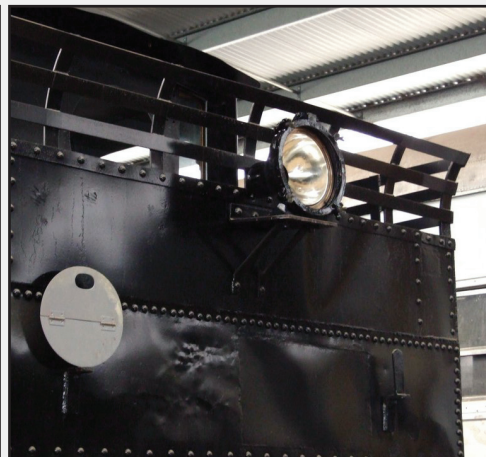
D23 is a 300kW (400hp) diesel-electric locomotive built for BHP by English Electric at Rocklea, Brisbane, Queensland in 1960. The locomotive saw service at the BHP steelworks at Port Kembla until withdrawn in 1994. The company generously donated D23 to State Mine in 1995 and the unit was operational until about 2005. Recent volunteer effort has seen the locomotive repainted in its original orange and black BHP livery, engine repairs completed and a new set of batteries installed. Easter Sunday saw D23 started for the first time since 2005, a significant milestone for LSMR restoration.



LEFT and CENTRE: D23 currently under restoration has just had a new set of batteries installed and is being painted back into its original orange and black BHP colours. Easter Sunday, 8 April 2012, saw her started for the first time since 2005. **RIGHT:** Bill Parkinson installed the new batteries and went over D23 electrically while Tim Elderton prepared the engine and ancillaries before it was fired up. Image shows Tim and Bill encountering some injector problems which delayed the start up of D23 until the problems were resolved.

Steam Locomotive 2605

Built by Dubs and Company of Glasgow, 2605 was one of twenty 2-6-2 wheel arrangement I Class (26 Class in 1924 classification) saddle tank locomotives built for the New South Wales Railways in 1892. The 26 class saw service in various locations in NSW with a significant number located in Lithgow over the years. 2605 was sold to the Portland Cement Company and was subsequently acquired by Lithgow State Mine. The locomotive was damaged in the 2001 carriage shed fire and has been out of service ever since. Work on returning the unit to service recommenced last year and it is hoped that 2012 will see 2605 in steam once again.



LEFT: 2605 sits in the Workshop showing progress of recent restoration work.

RIGHT: 2605's bunker headlight has been restored by Scott Arnell and now sits proudly on its perch on the locomotive's coal bunker.

Ex-SAR BE 1st and 2nd class car No. 343

LSMR has acquired several former South Australian Railways (SAR) carriages which will be used for future tourist trains operating on the Branch and hopefully beyond. Restoration work on these cars has commenced with BE 1st and 2nd class car No. 343 being the first to receive attention under the guidance of Tim Elderton. More recently new volunteers Karen and Donald Butler have been varnishing the interior and installing seats.



FAR LEFT: Exterior view of BE 343 in the Workshop showing restoration work in progress.



LEFT: Two views of progress on restoring the interior of the car.

Restoration Projects Update

The To Do List

English Electric Locomotive D23

- Replace two leaking head gaskets
- Finish sanding back and painting the body
- Finish fitting out the drivers cab
- Repair parallel traction circuit
- Unblock coolant level sight glass piping
- 360 day service and numerous minor repairs.

Steam Locomotive 2605

- Fit brake cylinder gland seal
- Finish repairs to trailing truck
- Remove dome cover and wash out boiler barrel for boiler inspector
- Service and fit cab boiler fittings
- Fit rear headlight
- Install wiring and conduit to both headlights.

Ex-SAR car BE 343

- Install upholstery
- Rub back and varnish second half of interior
- Repair and install end steps
- Install lighting and missing wiring
- Purchase and install batteries.

Information Meeting and BBQ – Sunday 6 May 2012

National Volunteer Week (NVW) is the largest celebration of volunteers and volunteerism in Australia, and provides an opportunity to highlight the role of volunteers in our communities and to say thank you to the more than 6.1 million Australians who volunteer.

Australian volunteers are essential to society and many charities would struggle to survive without the support of their volunteers. Australian volunteers contribute more than 700 million hours of community service to so many areas of society, including community health care, heritage and arts, environment conservation, emergency services, education, social justice and sports. NVW provides a platform to pay tribute to these volunteers who donate their time and energy to help others.

As part of our contribution to National Volunteer's Week, LSMR will be holding an **Information Meeting and BBQ** in our Workshop at the Lithgow State Mine on Sunday 6 May at 10.00 am. All members as well as interested members of the community are welcome to attend. The day will kick off with a tour of the workshop and some updates on our current projects as well as future directions and activities of the organisation. This will be followed by a BBQ lunch.

We are entering a very exciting phase of our development and the day is drawing closer when we will be able to deliver a tourist rail operation not only for the community but one that will attract the punters from outside our great city to experience what we already know.

Where: Lithgow State Mine Railway Workshop, State Mine Gully Road, Lithgow NSW 2790

When: 10.00 am Sunday 6 May 2012



LSMR Calendar

May

- Sunday 6** Information Day and BBQ
Sunday 13 Working Bee
Sunday 20 Working Bee
Sunday 27 Working Bee

June

- Sunday 3** Working Bee
Sunday 10 Working Bee
Sunday 17 Working Bee
Sunday 24 Working Bee

Photo Credits

This Issue

Scott Arnell
John Clifton
Michael Wilson

Contact Us:

Workshop and Office: Lithgow State Mine Railway Workshop
Lithgow State Mine Heritage Park
State Mine Gully Road
Lithgow NSW 2790

Postal Address: The Secretary
PO Box 350
Lithgow NSW 2790

Phone: (02) 6351 3437

International: +61 2 6351 3437

Mobile: 0427 455 580 Michael Wilson - Chairman
0429 140 654 Tim Elderton - General Manager
0448 501 049 Ron McNair - CFO
0432 843 870 Ben Hudson Volunteer Services Coordinator

Email: mail@stateminerailway.com.au

Follow LSMR on 

www.stateminerailway.com.au

Membership:

To become a member of Lithgow State Mine Railway complete the Membership Form on the back page or download a form at:

www.stateminerailway.com.au

Subscribe:

To subscribe to the Lithgow State Mine Railway Newsletter provide your details at:

www.stateminerailway.com.au

Volunteer:

Contact Ben Hudson on 0432 843 870

Contributions:

If you have photos, stories or other contributions to this Newsletter contact:

news@stateminerailway.com.au

Lithgow State Mine Railway Limited

Office:

Lithgow State Mine Railway Limited
Eskbank Railway Station
Inch Street,
Lithgow N.S.W 2790

Workshop & Museum

Lithgow State Mine Heritage Park
State Mine Gully Road
Lithgow N.S.W 2790

Email: mail@stateminerailway.com.au

Web: www.stateminerailway.com.au

All Correspondence To:

The Secretary
PO Box 350
Lithgow N.S.W. 2790

Phone: (02) 6351 3437

Fax: (02) 6352 2513

Mobile: 0427455580

ABN: 56 119 090 256

ACN: 119 090 256

APPLICATION FOR MEMBERSHIP

I,
(full name of applicant)

of
(address)

.....
(occupation) (Telephone) (Email Address)

hereby apply to become a member of the above named Company. In the event of my admission as a member, I agree to be bound by the rules of the Company for the time being in force.

Signature of Applicant

Date

I, a member of the Company, *nominate* the applicant,
(full name & membership number)

for membership of the Company.

Signature of Proposer.....

Date

I, remember of the Company, *second* the nomination of the
(full name membership number)

applicant for membership of the Company.

Signature of Seconder

Date